


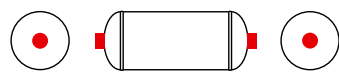


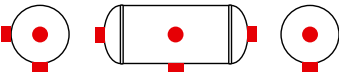
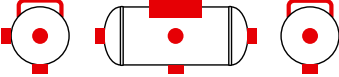

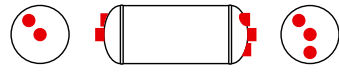


AIR RESERVOIRS


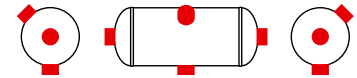
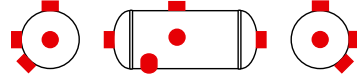
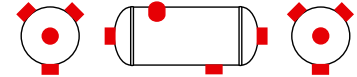

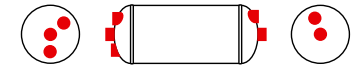

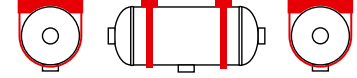

Product Catalogue



WABCO



 5
 5
 5
 6
 6
 7
 8
 9
 9
 10

 10
 10
 11
 11
 11
 12
	Alu..... 12
 13
 13

© Copyright WABCO 2015

WABCO

Subject to change without notice.
820 010 112 3 05.2015 (en)

Pressure Vessel Information EN 286-2

for users and first-time buyers

Accompanying documentation in accordance with EN 286-2 and EC Directive 2009/105/EG

Declaration of conformity in accordance with article 12 of the European Directive 2009/105/EG

We hereby declare on our own responsibility that the pressure vessels fulfil the requirements of the EN 286 part 2 and the European Directive 2009/105/EG and concur with the corresponding approved type pattern. As proof of this, the CE symbol and the registered number of the notified body appear on the identification plaque.

The vessels are only for use in air braking systems and auxiliary systems on motor vehicles and their trailers and are intended to contain only air. The pressure vessels are designed mainly for static operation $N \leq 1000$ load alternations. Pressure fluctuations over the working pressure level may not exceed 20 % of the max. working pressure. The working pressure of the vessel may momentarily exceed the maximum permissible working pressure by 10 %.

For identification purposes, the vessel is marked with the pressure vessel manufacturer's name or logo (FEL), a serial number and the following identification data:

- Part no.
- Minimum permissible working temperature (°C)
- Maximum permissible working temperature (°C)
- Volume (litres)
- Maximum permissible working pressure (bar)
- Norm: EN 286 - 2: 1992: number and year of norm issue
- Year of manufacture
- CE 0045: EG-symbol in accordance with article 16 of the European Directive 2009/105/EG with the registered number of the notified body
(the registered number of the notified body only in case where the product of pressure as specified and capacity of the vessel is greater than 200 bar x litres).

No welding, heat treatment or any other procedure may be carried out on any part the vessels. The vessels are to be mounted on the vehicle using straps or via brackets fitted on the vessels themselves. Here, it is important that the vessels are not subjected to stresses that could impair their safety in use. Therefore mounting on the threaded bosses is not allowed. The mounting straps must not come into contact with the vessel end welds. Where accessories are fastened directly to the threaded bosses of the vessels a maximum moment of force of 110 Nmm is permissible. This dimension refers to the effective centre-of-gravity distance of the accessory to the end face of the threaded boss. In addition, the mounting instructions of the accessory manufacturers are to be observed.

Material matings must be chosen in such a way that no corrosion can take place between them. If necessary these materials should be separated via elastic and solvent-resistant material. The interior of the steel vessels is corrosion protected. Until they are mounted on the vehicles, the vessels must be stored in a dry place. From the moment the vessel is delivered, the vehicle manufacturer is responsible for the corrosion protection of the vessel. The final top-coat applied by the vehicle manufacturer must guarantee the corrosion protection of the contact surfaces of the threaded mounting bosses and of the mounting accessories.

The interior of the vessels can be inspected through the boss openings. To prevent the build up of condensate, the vessels must be drained off daily, if the vehicle manufacturer does not specify another drainage interval. The vessel is to be mounted in such a way that the drainage valve is at the lowest point of the vessel. If all the requirements with regard to mounting and drainage are adhered to, the vessel is maintenance-free. To clean the vessels, only alkali-free detergents may be used.

Date: 04.02.2014

Rev.: N



SAFETY INSTRUCTIONS



CAUTION

- Comply with the valid regulations for the use of air reservoirs.
- Use WABCO air reservoirs only up to the allowed pressure.
- It is strictly forbidden to weld any part on the air reservoir.
- Use WABCO air reservoirs only for Compressed Air Braking Systems in vehicles.
- The air reservoir should be in a low position as possible so that piping can be installed sloping downwards towards the reservoir.
- Drain the air reservoirs by drain valve.
- Usage of proper WABCO clamps is highly recommended.
- The name plate must be covered while painting to keep it readable:

WABCO designs and manufactures devices and systems intended for the braking of Industrial Vehicles. WABCO is since always the privileged partner of the large manufacturers of air reservoirs thanks to the experience, the means implemented, the quality and expertise of its engineers.

WABCO air reservoirs fulfill the requirements of the European Directive 2009/105/EG and are manufactured in accordance with this Directive.

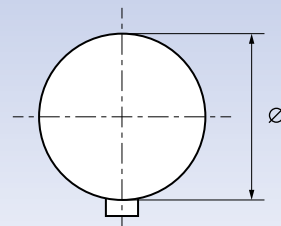
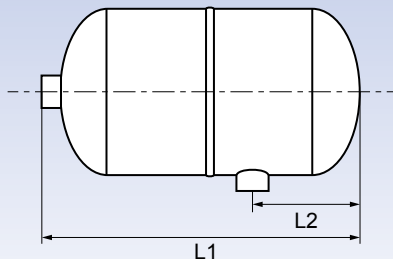
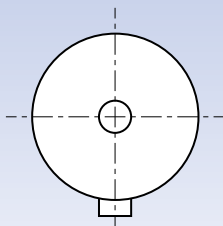
They also conform with the standard EN 286-2 which applies to the tanks of brake and the auxiliary circuit systems of the Industrial vehicles.

All the characteristics of design are defined with precision in the Directive, and reservoir WABCO fulfill the lawful requirements and go even beyond:

- The characteristics of the steels chosen for their ductility, their resistance and their weldability, confèrent with tanks WABCO an exceptional quality.
- The form of the shell and the end cover as well as the process of assembly allow a perfect alignment guaranteeing at the same time the quality of welding and the complete penetration of internal painting.
- The high advanced manufacturing process, welding, anti-corrosion painting, testing procedures guarantee the quality of WABCO air reservoirs.
- The manufacturing plant is certified ISO 9002, this is an additional pledge of quality of WABCO air reservoirs.

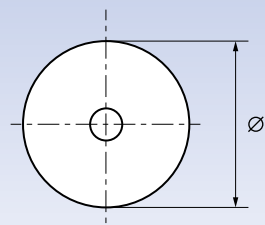
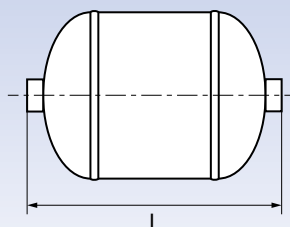
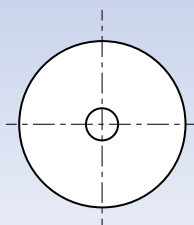
DESIGN FEATURES

- | | |
|---|--------------------|
| ■ Range of operating pressure (PS): | 10 ... 19 bar |
| ■ Range of temperature of service: | -50° ... +100 °C |
| ■ Exceptional temperature (1 hour, without pressure): | +120 °C |
| ■ Volume: | 0.6 ... 100 litres |
| ■ Fluid: | air |
| ■ Directive: | EN 286-2 |
| ■ Homologation: | EC |



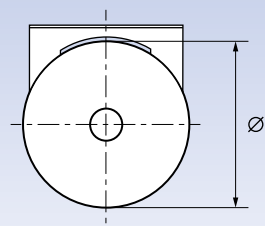
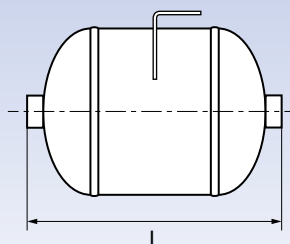
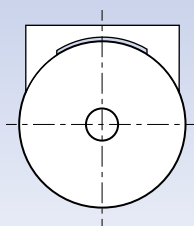
Steel

WABCO #							
951 005 010 0	1 l	15.5 bar	102 mm	170 / 50 mm	1.13 kg	M 22×1.5	



Steel

WABCO #							
950 001 003 0	0.60 l	15.5 bar	102 mm	129 mm	0.82 kg	½"-14 NPSI	
951 002 157 0	4.25 l	15.5 bar	206 mm	192 mm	2.80 kg	M 22×1.5	

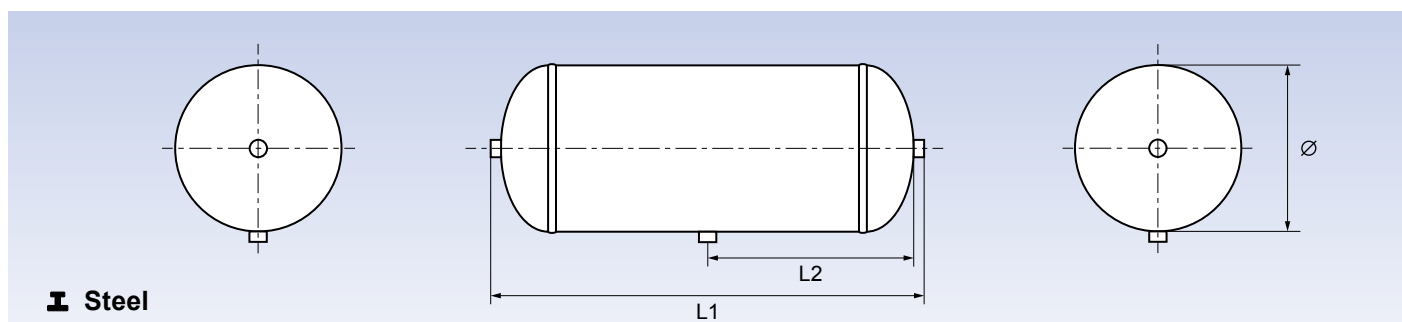


Steel

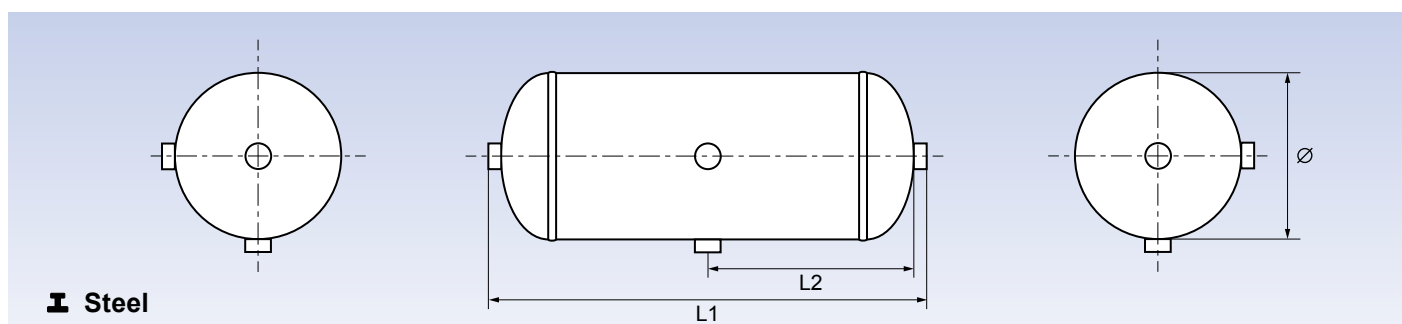
WABCO #							
951 002 133 0	4.00 l	12.5 bar	206 mm	192 mm	3.40 kg	M 22×1.5	



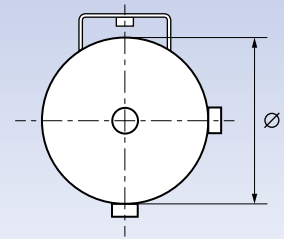
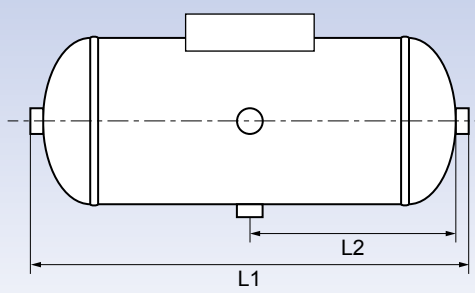
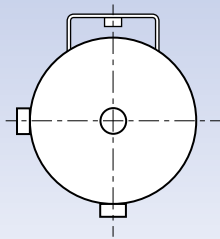
Air Reservoirs



WABCO #			Ø	↔ L1 / L2			
951 002 158 0	4 l	15.5 bar	154 mm	278 / 126 mm	2.6 kg	M 22×1.5	
950 110 002 0	10 l	20.0 bar	154 mm	615 / 295 mm	5.1 kg	M 22×1.5	

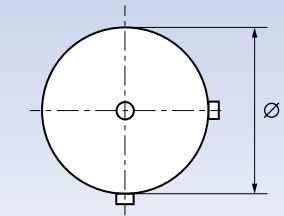
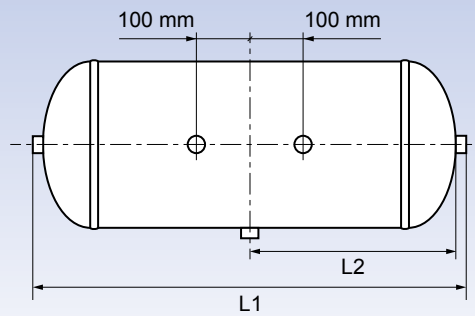
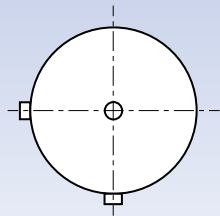


WABCO #			Ø	↔ L1 / L2			
950 620 005 0	20 l	15.5 bar	246 mm	503 / 238 mm	7.1 kg	M 22×1.5	
950 820 001 0	20 l	12.5 bar	300 mm	381 / 177.5 mm	6.8 kg	M 22×1.5	
950 628 001 0	28 l	15.5 bar	246 mm	665 / 319.5 mm	9.2 kg	M 22×1.5	
950 630 006 0	30 l	15.5 bar	246 mm	718 / 346 mm	9.7 kg	M 22×1.5	
950 830 004 0	30 l	12.5 bar	300 mm	528 / 251 mm	9.0 kg	M 22×1.5	
950 845 002 0	45 l	12.5 bar	300 mm	743 / 358.5 mm	12.2 kg	M 22×1.5	
950 860 004 0	60 l	12.5 bar	300 mm	966 / 470 mm	15.5 kg	M 22×1.5	



Steel

WABCO #				L1 / L2			
950 105 001 0	5 l	20.0 bar	154 mm	341 / 157.5 mm	3.4 kg	M 22×1.5	



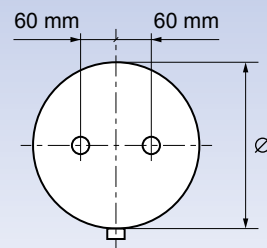
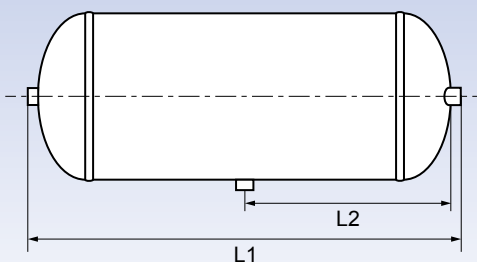
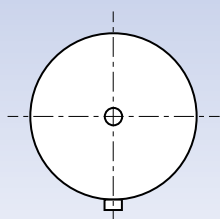
Steel

WABCO #				L1 / L2			
950 845 001 0	45 l	12.5 bar	300 mm	740 / 357 mm	12.2 kg	M 22×1.5	
950 060 009 0	60 l	12.5 bar	300 mm	950 / 462 mm	15.4 kg	M 22×1.5	











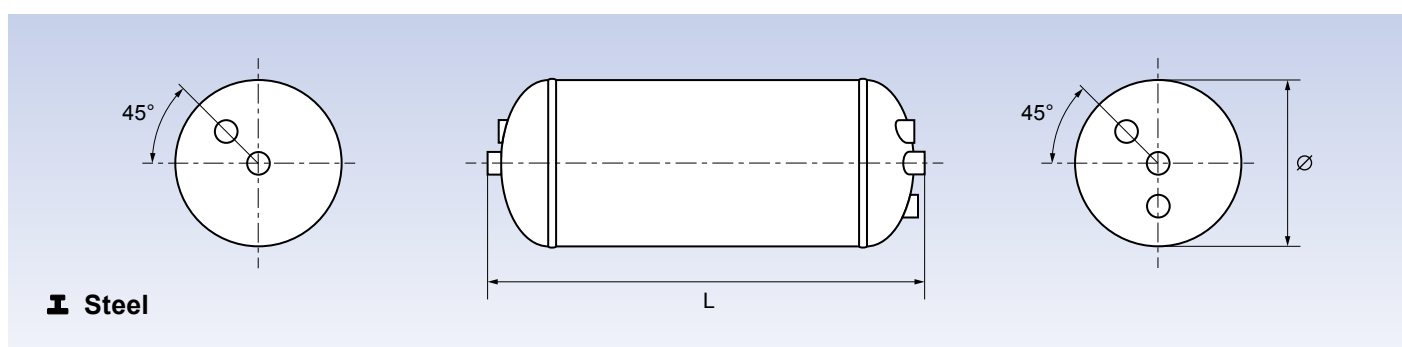
Air Reservoirs







Steel

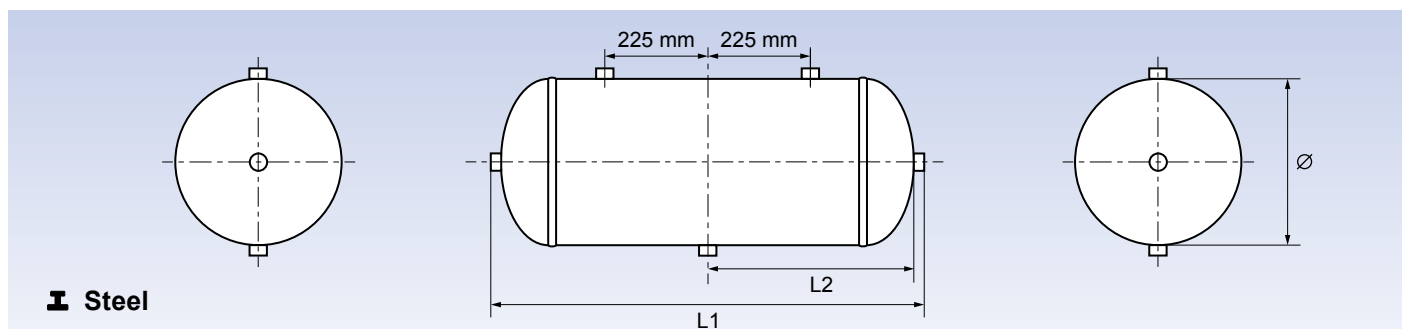








WABCO #			\varnothing	\longleftrightarrow L1 / L2			
950 405 001 0	4.5 l	15.5 bar	206 mm	185 / 87 mm	3.0 kg	M 22×1.5	
950 406 001 0	6 l	15.5 bar	206 mm	241 / 115 mm	3.0 kg	M 22×1.5	
950 410 004 0	10 l	15.5 bar	206 mm	368 / 178.5 mm	4.7 kg	M 22×1.5	
950 410 902 0	10 l	15.5 bar	206 mm	355 / 172 mm	4.5 kg	M 22×1.5	
950 415 005 0	15 l	15.5 bar	206 mm	527 / 257 mm	6.3 kg	M 22×1.5	
950 515 003 0	15 l	15.5 bar	246 mm	380 / 181 mm	5.9 kg	M 22×1.5	
950 516 004 0	16 l	15.5 bar	246 mm	411 / 197 mm	6.0 kg	M 22×1.5	
950 420 003 0	20 l	15.5 bar	206 mm	691 / 340 mm	8.0 kg	M 22×1.5	
950 520 003 0	20 l	15.5 bar	246 mm	495 / 239 mm	7.2 kg	M 22×1.5	
950 720 005 0	20 l	14.5 bar	276 mm	414 / 197.5 mm	6.7 kg	M 22×1.5	
950 722 002 0	22 l	14.5 bar	276 mm	452 / 216.5 mm	7.2 kg	M 22×1.5	
950 525 001 0	25 l	15.5 bar	246 mm	601 / 292 mm	8.6 kg	M 22×1.5	
950 527 005 0	27 l	15.5 bar	246 mm	645 / 178.5 mm	8.9 kg	M 22×1.5	
950 430 001 0	30 l	15.5 bar	206 mm	992 / 490.5 mm	11.2 kg	M 22×1.5	
950 530 002 0	30 l	15.5 bar	246 mm	709 / 346 mm	10.0 kg	M 22×1.5	
950 730 007 0	30 l	14.5 bar	276 mm	582 / 282 mm	9.0 kg	M 22×1.5	
950 537 001 0	37 l	15.5 bar	246 mm	862 / 422 mm	11.9 kg	M 22×1.5	
950 540 001 0	40 l	15.5 bar	246 mm	927 / 455 mm	12.7 kg	M 22×1.5	
950 740 002 0	40 l	14.5 bar	276 mm	758 / 369.5 mm	11.5 kg	M 22×1.5	
950 740 906 0	40 l	12.5 bar	310 mm	618 / 300 mm	11.2 kg	M 22×1.5	
950 760 002 0	60 l	14.5 bar	276 mm	1108 / 544.5 mm	16.2 kg	M 22×1.5	

WABCO #			Ø	↔ L1 / L2			
950 060 003 0	60 l	12.5 bar	310 mm	893 / 437 mm	15.2 kg	M 22×1.5	
950 060 004 0	60 l	10.0 bar	396 mm	580 / 280 mm	13.9 kg	M 22×1.5	
950 560 002 0	60 l	15.5 bar	246 mm	1365 / 674 mm	18.0 kg	M 22×1.5	
950 080 002 0	80 l	10.0 bar	396 mm	750 / 365 mm	17.2 kg	M 22×1.5	
950 100 002 0	100 l	10.0 bar	396 mm	915 / 447 mm	20.5 kg	M 22×1.5	



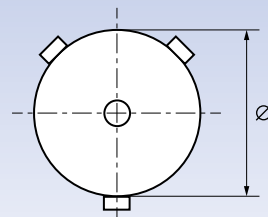
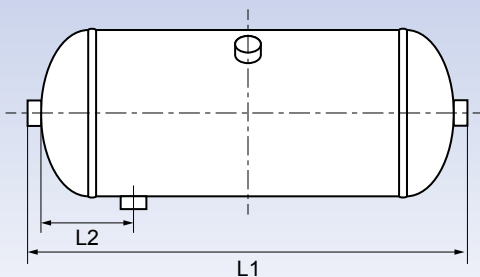
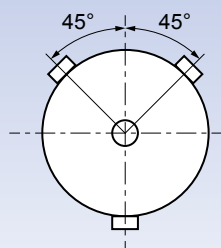
WABCO #			Ø	↔ L			
950 315 003 0	15 l	15.5 bar	206 mm	546.5 mm	6.7 kg	M 22×1.5	



WABCO #			Ø	↔ L1 / L2			
950 630 001 0	30 l	12.5 bar	246 mm	708 / 341 mm	10.4 kg	½"-14 NPSI	

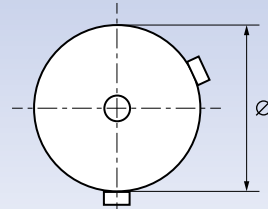
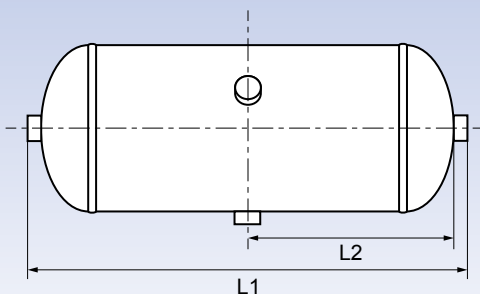
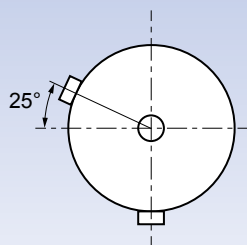


Air Reservoirs



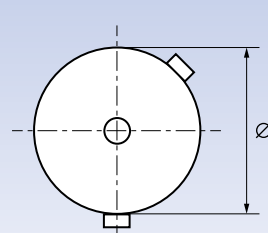
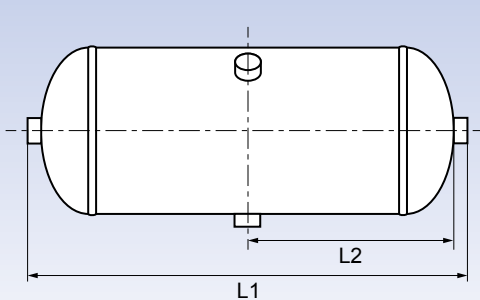
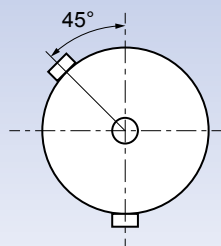
Steel

WABCO #							
950 630 002 0	30 l	12.5 bar	246 mm	708 / 110 mm	10.4 kg	½"-14 NPSI	



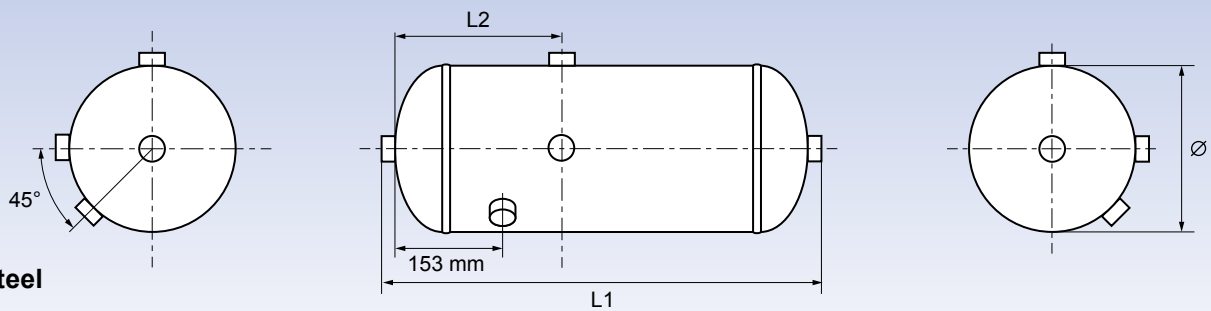
Steel

WABCO #							
950 630 005 0	30 l	15.5 bar	246 mm	718 / 346 mm	9.7 kg	M 22×1.5	

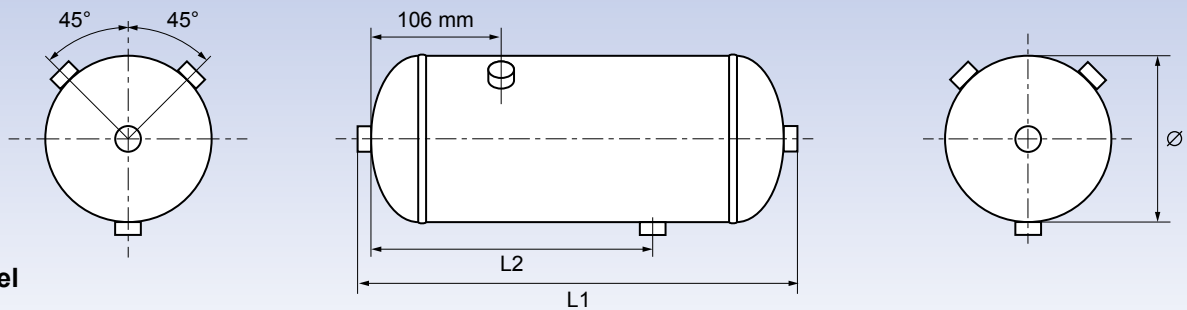


Steel

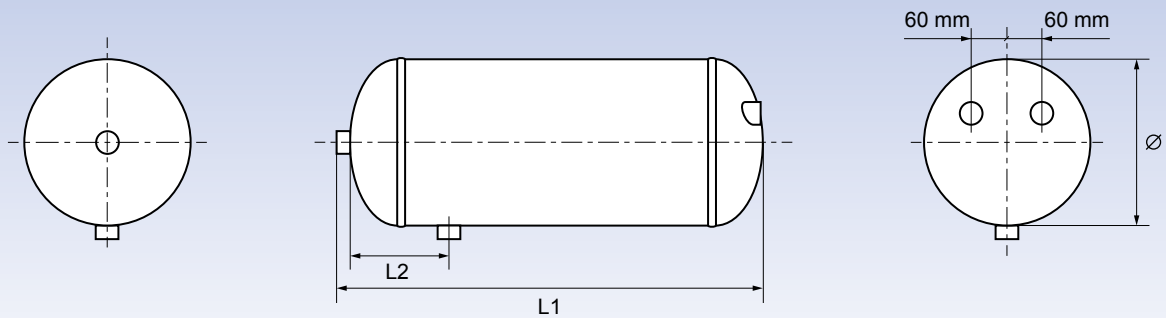
WABCO #							
950 620 007 0	20 l	15.5 bar	246 mm	504 / 239 mm	7.1 kg	M 22×1.5	



WABCO #							
950 836 001 0	36	12.5 bar	300 mm	603 / 254 mm	10.2 kg	M 22×1.5	



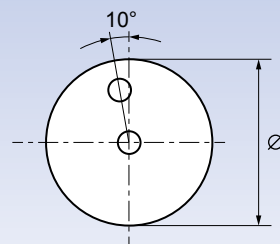
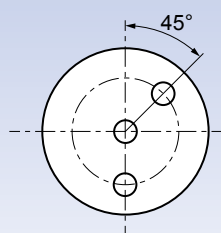
WABCO #							
950 310 001 0	10 l	15.5 bar	206 mm	386 / 254.5 mm	4.9 kg	½" NPSI	



WABCO #							
950 620 006 0	20 l	15.5 bar	246 mm	487 / 107 mm	7.4 kg	M 22×1.5	

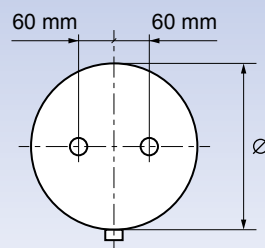
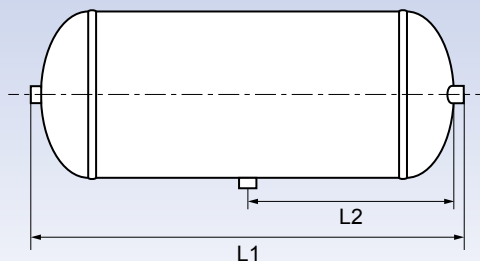
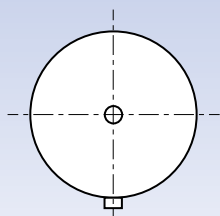


Air Reservoirs



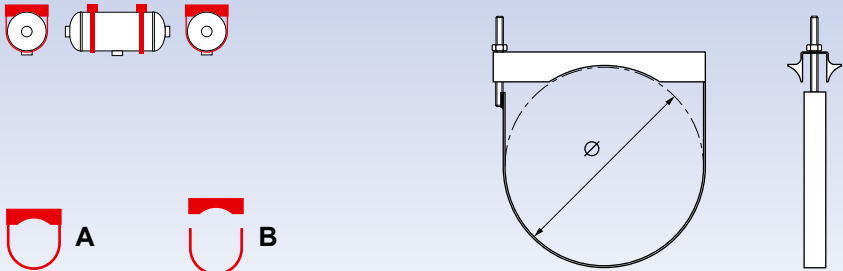
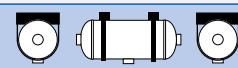
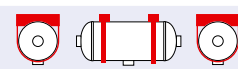
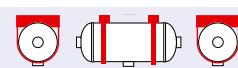
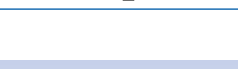
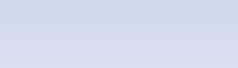
Steel

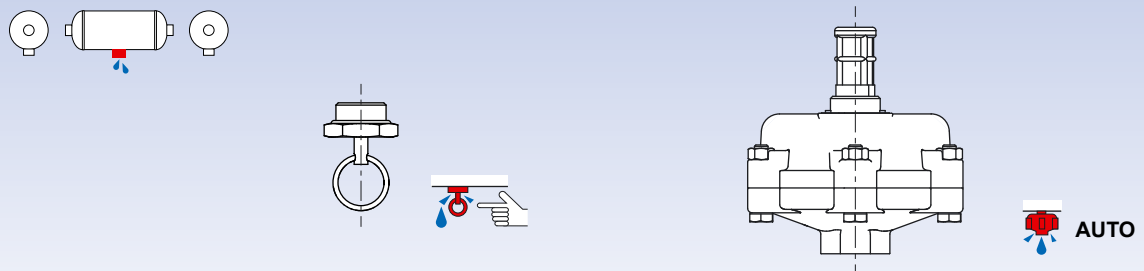





WABCO #							
950 730 006 0	30 l	14.5 bar	276 mm	590.5 mm	9.7 kg	M 22×1.5	



Alu

WABCO #							
950 530 903 0	30 l	15.5 bar	246 mm	729.5 / 353.5 mm	4.7 kg	M 22×1.5	
950 740 904 0	40 l	15.5 bar	276 mm	765.5 / 371 mm	5.9 kg	M 22×1.5	
950 960 002 0	60 l	12.5 bar	310 mm	907 / 441.5 mm	7.8 kg	M 22×1.5	
950 080 903 0	80 l	10.0 bar	396 mm	761.5 / 368 mm	10.1 kg	M 22×1.5	

			
A WABCO #	B WABCO #	Ø	
451 999 206 2	950 405 351 2	206 mm	
451 999 246 2	950 515 351 2	246 mm	
451 999 276 2	950 720 351 2	276 mm	
451 999 310 2	950 949 351 2	310 mm	
451 999 396 2	950 001 351 2	396 mm	

			
WABCO #		Type	
934 300 001 0	M 22×1.5	manual (w/o ring)	
934 300 003 0	M 22×1.5	manual	
934 300 002 0	R 1/2"	manual	
934 301 000 0	M 22×1.5	automatic (delta p < 0.4 bar)	
934 301 003 0	M 22×1.5	automatic (delta p = 0.5 ± 0.2 bar)	



Air Reservoirs

WABCO # →

WABCO #	
451 999 206 2	13
451 999 246 2	13
451 999 276 2	13
451 999 310 2	13
451 999 396 2	13
934 300 001 0	13
934 300 002 0	13
934 300 003 0	13
934 301 000 0	13
934 301 003 0	13
950 001 003 0	5
950 001 351 2	13
950 060 003 0	9
950 060 004 0	9
950 060 009 0	7
950 080 002 0	9
950 080 903 0	12
950 100 002 0	9
950 105 001 0	7
950 110 002 0	6
950 310 001 0	11
950 315 003 0	9
950 405 001 0	8
950 405 351 2	13

WABCO #	
950 406 001 0	8
950 410 004 0	8
950 410 902 0	8
950 415 005 0	8
950 420 003 0	8
950 430 001 0	8
950 515 003 0	8
950 515 351 2	13
950 516 004 0	8
950 520 003 0	8
950 525 001 0	8
950 527 005 0	8
950 530 002 0	8
950 530 903 0	12
950 537 001 0	8
950 540 001 0	8
950 560 002 0	9
950 620 005 0	6
950 620 006 0	11
950 620 007 0	10
950 628 001 0	6
950 630 001 0	9
950 630 002 0	10
950 630 005 0	10

WABCO #	
950 630 006 0	6
950 720 005 0	8
950 720 351 2	13
950 722 002 0	8
950 730 006 0	12
950 730 007 0	8
950 740 002 0	8
950 740 904 0	12
950 740 906 0	8
950 760 002 0	8
950 820 001 0	6
950 830 004 0	6
950 836 001 0	11
950 845 001 0	7
950 845 002 0	6
950 860 004 0	6
950 949 351 2	13
950 960 002 0	12
951 002 133 0	5
951 002 157 0	5
951 002 158 0	6
951 005 010 0	5



QUALITY ASSURED

Every WABCO part is made of high-grade materials and is rigorously tested by WABCO before leaving our hands. Each is a product of WABCO's 150 year history of innovation and design excellence. There is also an added assurance that the quality of every WABCO part is reinforced by a powerful global customer service network.



a **WORLD** of
DIFFERENCE

WABCO

WABCO (NYSE: WBC) is a leading innovator and global supplier of technologies that improve the safety and efficiency of commercial vehicles. Founded nearly 150 years ago, WABCO continues to pioneer breakthrough products and systems for braking, stability, suspension, transmission automation, and aerodynamics. Today, all of the world's leading truck, bus and trailer manufacturers have WABCO technologies onboard. In addition, WABCO provides the industry with advanced fleet management solutions and aftermarket services. WABCO reported sales of \$2.9 billion in 2014. The company is headquartered in Brussels, Belgium, and has 11,000 employees worldwide. For more information, visit

www.wabco-auto.com

DEALER

WABCO