

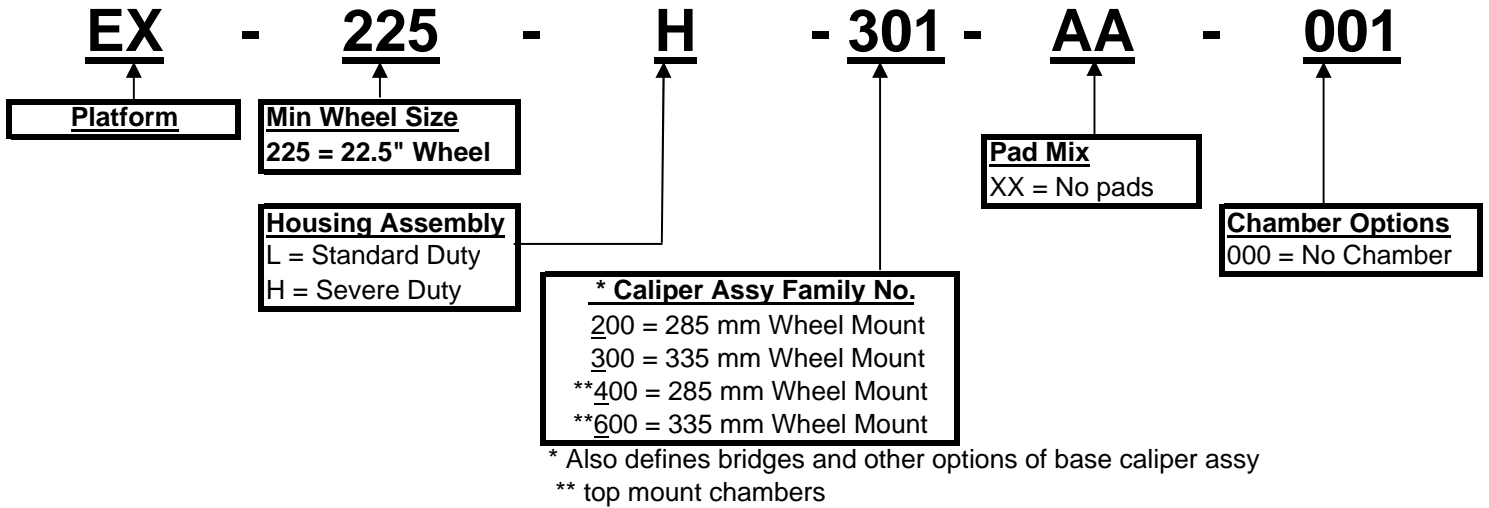


EX Air Disc Brake Catalog Supplement

CONTENTS

EX225 Brake Nomenclature.....	Page 2
EX225H2 Series.....	Page 3
EX225H3 Series.....	Page 7
EX225H6 Series.....	Page 10
EX225L2 Series.....	Page 13
Brake Chambers (All).....	Page 15
Front Hubs (All).....	Page 16
Rear Hubs (All).....	Page 18

EX - Nomenclature



How to determine a service caliper:

1. Find the model number located on the caliper tag.
2. Remove the pad mix & chamber option.
3. Add XX000 to the end (no pads / no chamber).

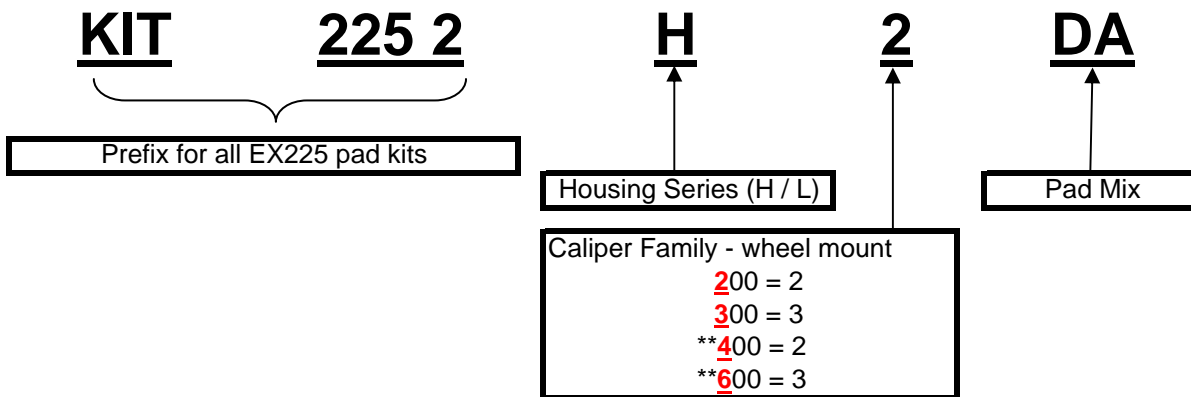
Example

A. Tag Model number
EX225H301AA001

B. Service replacement
EX225H301XX000

***All EX 225 service calipers will be sold as a reman unit less brake pads.
(core charge will apply).

EX-225 PAD KITS



How to determine a service Pad Kit:

1. Find the model number located on the caliper tag.
2. Determine Housing Assembly type (L/H)
3. Determine First digit of Caliper Assy Family (2/3) ****If "4" use 2 / If "6" use 3****
4. Determine 2 digit pad mix code (AA/BB/.....DA/.....)
5. Using **KIT2252** as your prefix add on item # 2 #3 #4

Example

A. Tag Model number
EX225 L 201 CD 000

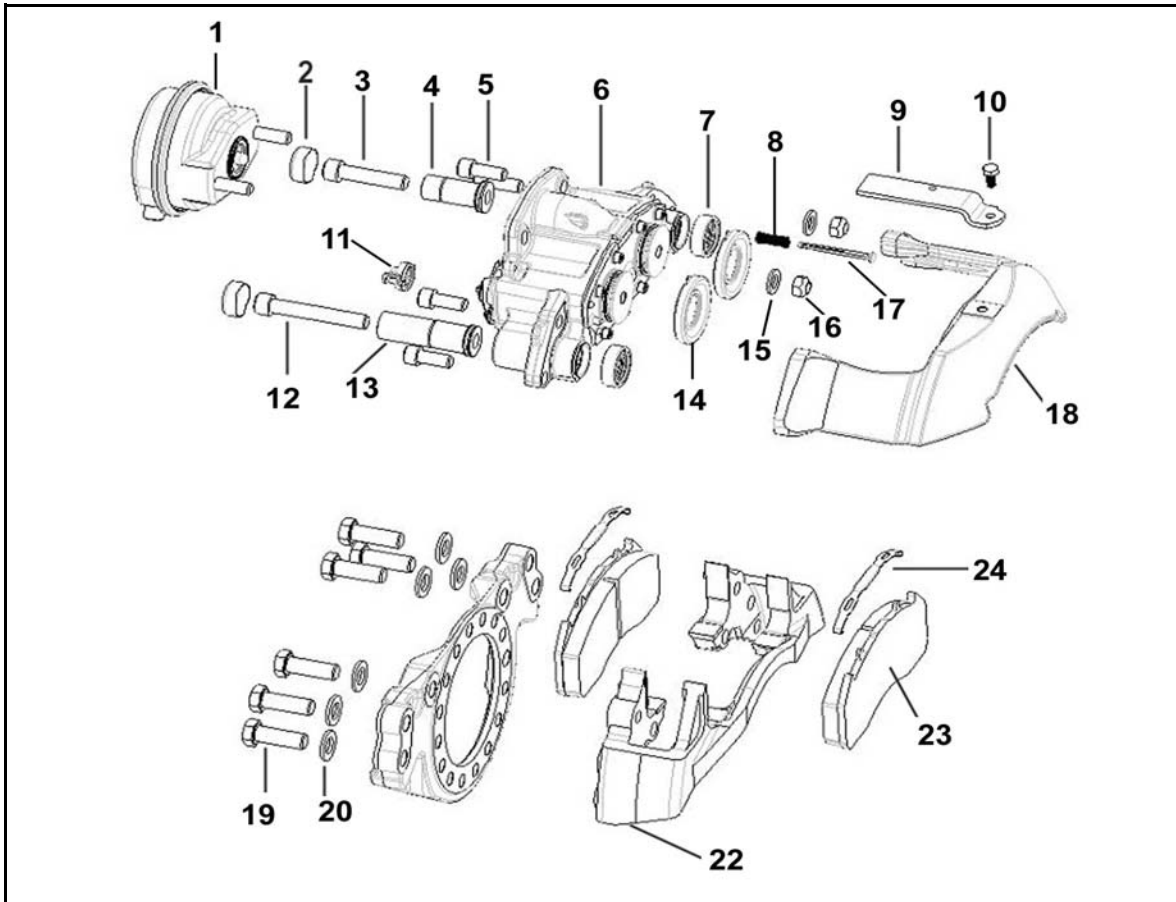
B. Service pad kit
KIT2252L2CD

Example

A. Tag Model number
EX225 H 601 BE 000

B. Service pad kit
KIT2252H3BE

EX225H2 AIR DISC BRAKE



SERVICE CALIPER

EX225H203XX000 (Shown)

Exp. View Item No.	Part Description	Qty.	Comments
2	Slide Pin Cap	2	Recommend Service Chamber also be replaced.
3	Short Slide Pin Bolt	1	
4	Short Slide Pin	1	
5	Bridge Bolts	4	
6	Caliper Housing Assembly	1	
7	Slide Pin Boot	2	
8	Visual Wear Indicator Spring	1	
9	Retainer	1	
10	Retainer Screw	1	
11	Manual Adjuster Cover	1	
12	Long Slide Pin Bolt	1	
13	Long Slide Pin	1	
14	Piston Boot	2	
17	Visual Wear Indicator	1	
18	Caliper Bridge	1	
22	Carrier	1	

NOTE: Service instruction maintenance manual MM-0467 is available at arvinmeritor.com

EX225H2 AIR DISC BRAKE

SERVICE CALIPER

EX225H204XX000 (Opposite)

Exp. View Item No.	Part Description	Qty.	Comments
2	Slide Pin Cap	2	Recommend Service Chamber also be replaced.
3	Short Slide Pin Bolt	1	
4	Short Slide Pin	1	
5	Bridge Bolts	4	
6	Caliper Housing Assembly	1	
7	Slide Pin Boot	2	
8	Visual Wear Indicator Spring	1	
9	Retainer	1	
10	Retainer Screw	1	
11	Manual Adjuster Cover	1	
12	Long Slide Pin Bolt	1	
13	Long Slide Pin	1	
14	Piston Boot	2	
17	Visual Wear Indicator	1	
18	Caliper Bridge	1	
22	Carrier	1	

SERVICE CALIPER

EX225H201XX000 (Shown)

Exp. View Item No.	Part Description	Qty.	Comments
2	Slide Pin Cap	2	Recommend Service Chamber also be replaced.
3	Short Slide Pin Bolt	1	
4	Short Slide Pin	1	
5	Bridge Bolts	4	
6	Caliper Housing Assembly	1	
7	Slide Pin Boot	2	
8	Visual Wear Indicator Spring	1	
9	Retainer	1	
10	Retainer Screw	1	
11	Manual Adjuster Cover	1	
12	Long Slide Pin Bolt	1	
13	Long Slide Pin	1	
14	Piston Boot	2	
17	Visual Wear Indicator	1	
18	Caliper Bridge	1	
22	Carrier	1	

NOTE: Service instruction maintenance manual MM-0467 is available at arvinmeritor.com

EX225H2 AIR DISC BRAKE

SERVICE CALIPER

EX225H202XX000 (Opposite)

Exp. View Item No.	Part Description	Qty.	Comments
2	Slide Pin Cap	2	Recommend Service Chamber also be replaced.
3	Short Slide Pin Bolt	1	
4	Short Slide Pin	1	
5	Bridge Bolts	4	
6	Caliper Housing Assembly	1	
7	Slide Pin Boot	2	
8	Visual Wear Indicator Spring	1	
9	Retainer	1	
10	Retainer Screw	1	
11	Manual Adjuster Cover	1	
12	Long Slide Pin Bolt	1	
13	Long Slide Pin	1	
14	Piston Boot	2	
17	Visual Wear Indicator	1	
18	Caliper Bridge	1	
22	Carrier	1	

KIT 225205 - For FH & FL Axles

CALIPER TO TORQUE PLATE

KIT 225206 - For Coach S

MOUNTING KIT

KIT 225208 - For FF/FG, R Axles

Exp. View Item No.	Part Description	Qty.	Comments
19	Carrier Bolts	6	Not Available Separately
20	Washer	6	

SLIDE PIN KIT

KIT225200

Exp. View Item No.	Part Description	Qty.	Comments
3	Short Slide Pin Bolt	1	Not Available Separately
4	Short Slide Pin	1	
5	Bridge Bolts	4	
7	Slide Pin Boot	2	
12	Long Slide Pin Bolt	1	
13	Long Slide Pin	1	
14	Piston Boot	2	
Not Shown	Grease	1	

DISC PAD RETAINING KIT

KIT225210

Exp. View Item No.	Part Description	Qty.	Comments
9	Retainer	1	Not Available Separately
10	Retainer Screw	1	

NOTE: Service instruction maintenance manual MM-0467 is available at arvinmeritor.com

EX225H2 AIR DISC BRAKE

EX-225 PAD 761

KIT2252H2CD

Exp. View Item No.	Part Description	Qty.	Comments
23	Pad Assembly	4	Not Available Separately
24	Pad Spring	4	Part Number: 68324769

EX-225 PAD 720

KIT2252H2BE

Exp. View Item No.	Part Description	Qty.	Comments
23	Pad Assembly	4	Not Available Separately
24	Pad Spring	4	Part Number: 68324769

EX-225 PAD 741

KIT2252H2DA

Exp. View Item No.	Part Description	Qty.	Comments
23	Pad Assembly	4	Not Available Separately
24	Pad Spring	4	Part Number: 68324769

BOOT KIT

KIT225201

Exp. View Item No.	Part Description	Qty.	Comments
5	Bridge Bolts	4	Not Available Separately
7	Slide Pin Boot	2	
11	Manual Adjuster Cover	1	
14	Piston Boot	2	
Not Shown	Grease	1	

PADWEAR INDICATOR KIT

KIT225207

Exp. View Item No.	Part Description	Qty.	Comments
8	Spring	4	Not Available Separately
17	Indicator	4	

ELECTRONIC PADWEAR KIT

KIT225207ES

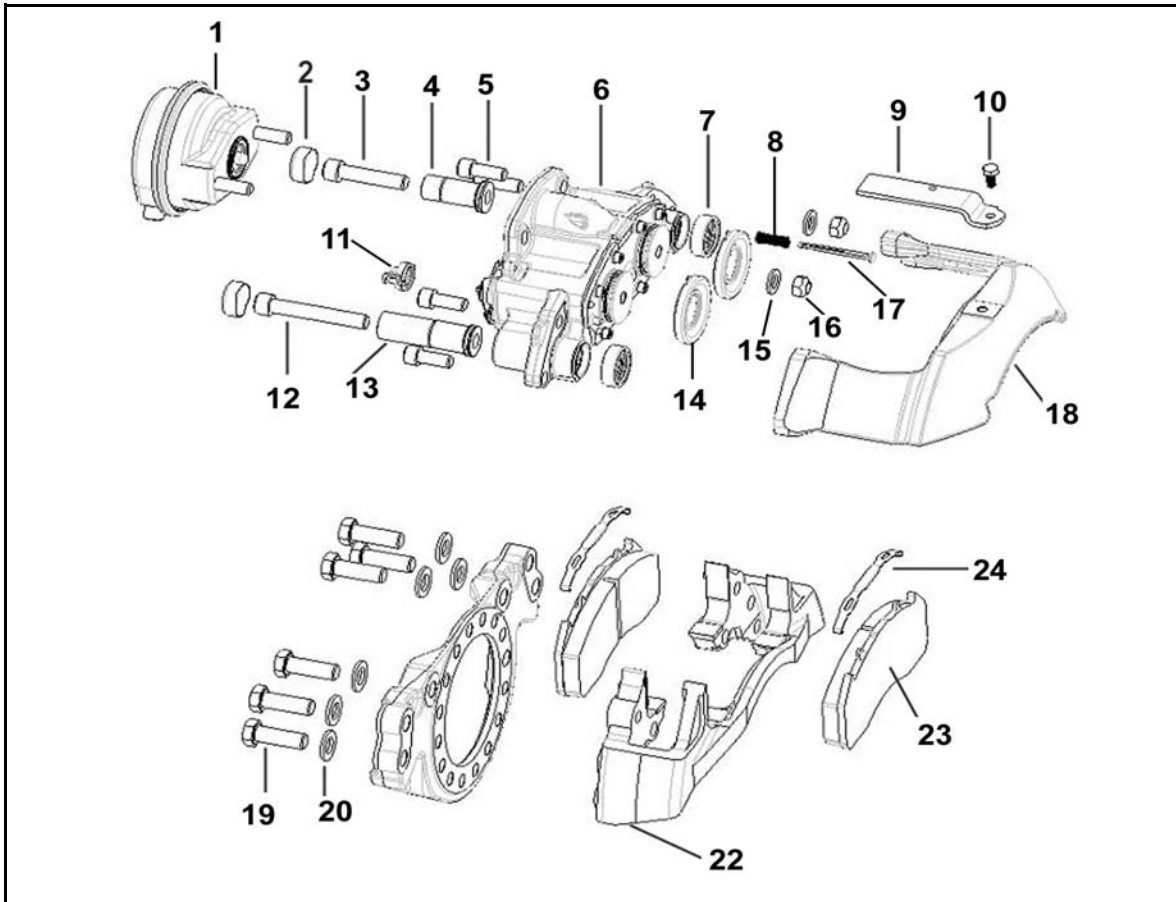
Exp. View Item No.	Part Description	Qty.	Comments
Not Shown	PWWI/Sensor	2	Not Available Separately
Not Shown	Bolts	2	
Not Shown	Brackets	2	

MST1504	Vacuum Test Adapter Plug
----------------	--------------------------

68966091Z	Grease Pack (20 pack)
------------------	-----------------------

NOTE: Service instruction maintenance manual MM-0467 is available at arvinmeritor.com

EX225H3 AIR DISC BRAKE



SERVICE CALIPER

EX225H301XX000 (Shown)

Exp. View Item No.	Part Description	Qty.	Comments
2	Slide Pin Cap	2	Recommend Service Chamber also be replaced.
3	Short Slide Pin Bolt	1	
4	Short Slide Pin	1	
5	Bridge Bolts	4	
6	Caliper Housing Assembly	1	
7	Slide Pin Boot	2	
8	Visual Wear Indicator Spring	1	
9	Retainer	1	
10	Retainer Screw	1	
11	Manual Adjuster Cover	1	
12	Long Slide Pin Bolt	1	
13	Long Slide Pin	1	
14	Piston Boot	2	
17	Visual Wear Indicator	1	
18	Caliper Bridge	1	
22	Carrier	1	

NOTE: Service instruction maintenance manual MM-0467 is available at arvinmeritor.com

EX225H3 AIR DISC BRAKE

SERVICE CALIPER

EX225H302XX000 (Opposite)

Exp. View Item No.	Part Description	Qty.	Comments
2	Slide Pin Cap	2	Recommend Service Chamber also be replaced.
3	Short Slide Pin Bolt	1	
4	Short Slide Pin	1	
5	Bridge Bolts	4	
6	Caliper Housing Assembly	1	
7	Slide Pin Boot	2	
8	Visual Wear Indicator Spring	1	
9	Retainer	1	
10	Retainer Screw	1	
11	Manual Adjuster Cover	1	
12	Long Slide Pin Bolt	1	
13	Long Slide Pin	1	
14	Piston Boot	2	
17	Visual Wear Indicator	1	
18	Caliper Bridge	1	
22	Carrier	1	

CALIPER TO TORQUE PLATE MOUNTING KIT

KIT 225205 - For FH Axles KIT 225206 - For Coach S

Exp. View Item No.	Part Description	Qty.	Comments
19	Carrier Bolts	6	Not Available Separately
20	Washer	6	

SLIDE PIN KIT

KIT225200

Exp. View Item No.	Part Description	Qty.	Comments
3	Short Slide Pin Bolt	1	Not Available Separately
4	Short Slide Pin	1	
5	Bridge Bolts	4	
7	Slide Pin Boot	2	
12	Long Slide Pin Bolt	1	
13	Long Slide Pin	1	
14	Piston Boot	2	
Not Shown	Grease	1	

DISC PAD RETAINING KIT

KIT225210

Exp. View Item No.	Part Description	Qty.	Comments
9	Retainer	1	Not Available Separately
10	Retainer Screw	1	

NOTE: Service instruction maintenance manual MM-0467 is available at arvinmeritor.com

EX225H3 AIR DISC BRAKE

EX-225 PAD 721

KIT2252H3CE

Exp. View Item No.	Part Description	Qty.	Comments
23	Pad Assembly	4	Not Available Separately
24	Pad Spring	4	Part Number: 68324769

EX-225 PAD 720

KIT2252H3BE

Exp. View Item No.	Part Description	Qty.	Comments
23	Pad Assembly	4	Not Available Separately
24	Pad Spring	4	Part Number: 68324769

BOOT KIT

KIT225201

Exp. View Item No.	Part Description	Qty.	Comments
5	Bridge Bolts	4	Not Available Separately
7	Slide Pin Boot	2	
11	Manual Adjuster Cover	1	
14	Piston Boot	2	
Not Shown	Grease	1	

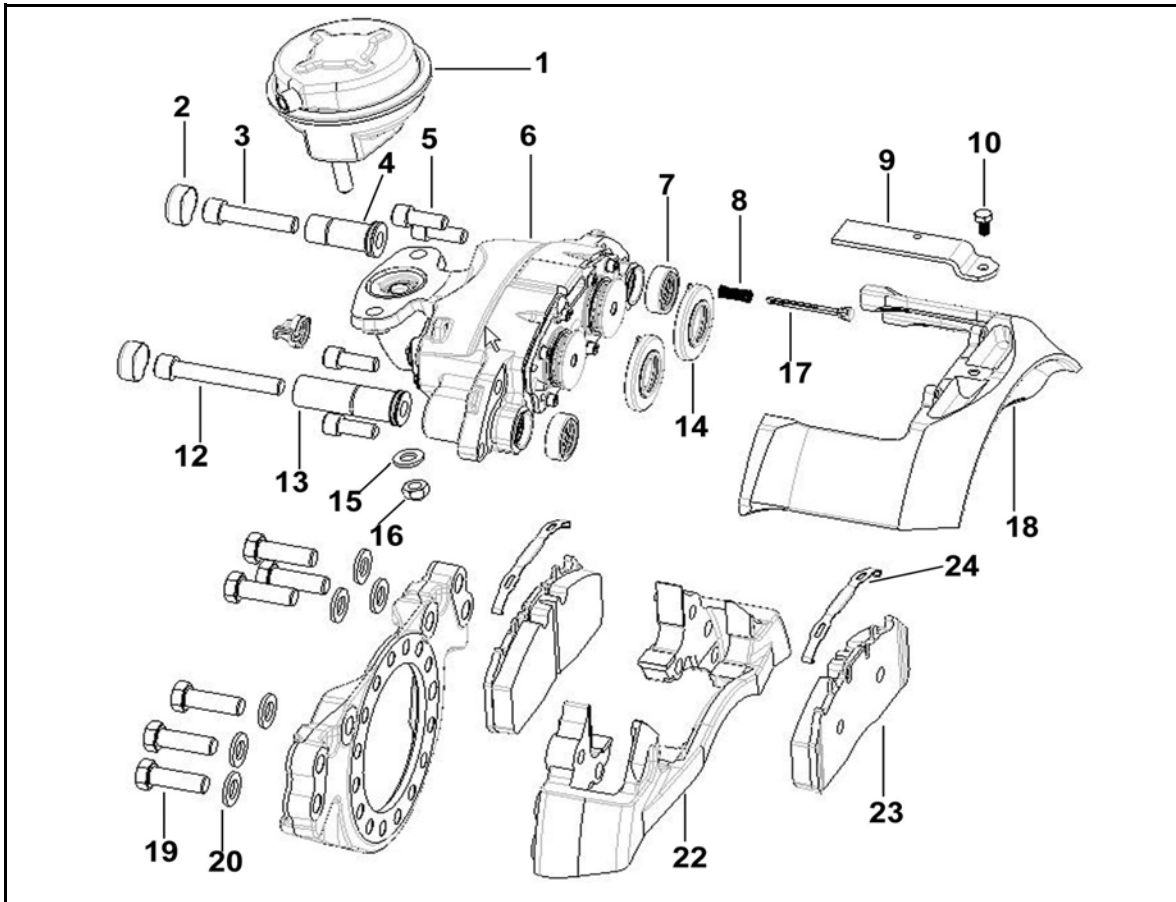
PADWEAR INDICATOR KIT

KIT225207

Exp. View Item No.	Part Description	Qty.	Comments
8	Spring	4	Not Available Separately
17	Indicator	4	

NOTE: Service instruction maintenance manual MM-0467 is available at arvinmeritor.com

EX225H6 AIR DISC BRAKE



SERVICE CALIPER

EX225H601XX000 (Shown)

Exp. View Item No.	Part Description	Qty.	Comments
2	Slide Pin Cap	2	Recommend Service Chamber also be replaced.
3	Short Slide Pin Bolt	1	
4	Short Slide Pin	1	
5	Bridge Bolts	4	
6	Caliper Housing Assembly	1	
7	Slide Pin Boot	2	
8	Visual Wear Indicator Spring	1	
9	Retainer	1	
10	Retainer Screw	1	
11	Manual Adjuster Cover	1	
12	Long Slide Pin Bolt	1	
13	Long Slide Pin	1	
14	Piston Boot	2	
17	Visual Wear Indicator	1	
18	Caliper Bridge	1	
22	Carrier	1	

NOTE: Service instruction maintenance manual MM-0467 is available at arvinmeritor.com

EX225H6 AIR DISC BRAKE

SERVICE CALIPER

EX225H602XX000 (Opposite)

Exp. View Item No.	Part Description	Qty.	Comments
2	Slide Pin Cap	2	Recommend Service Chamber also be replaced.
3	Short Slide Pin Bolt	1	
4	Short Slide Pin	1	
5	Bridge Bolts	4	
6	Caliper Housing Assembly	1	
7	Slide Pin Boot	2	
8	Visual Wear Indicator Spring	1	
9	Retainer	1	
10	Retainer Screw	1	
11	Manual Adjuster Cover	1	
12	Long Slide Pin Bolt	1	
13	Long Slide Pin	1	
14	Piston Boot	2	
17	Visual Wear Indicator	1	
18	Caliper Bridge	1	
22	Carrier	1	

CALIPER TO TORQUE PLATE MOUNTING KIT

KIT 225205 - For FH Axles KIT 225206 - For Coach S

Exp. View Item No.	Part Description	Qty.	Comments
19	Carrier Bolts	6	Not Available Separately
20	Washer	6	

SLIDE PIN KIT

KIT225200

Exp. View Item No.	Part Description	Qty.	Comments
3	Short Slide Pin Bolt	1	Not Available Separately
4	Short Slide Pin	1	
5	Bridge Bolts	4	
7	Slide Pin Boot	2	
12	Long Slide Pin Bolt	1	
13	Long Slide Pin	1	
14	Piston Boot	2	
Not Shown	Grease	1	

DISC PAD RETAINING KIT

KIT225210

Exp. View Item No.	Part Description	Qty.	Comments
9	Retainer	1	Not Available Separately
10	Retainer Screw	1	

NOTE: Service instruction maintenance manual MM-0467 is available at arvinmeritor.com

EX225H6 AIR DISC BRAKE

EX-225 PAD 720

KIT2252H3BE

Exp. View Item No.	Part Description	Qty.	Comments
23	Pad Assembly	4	Not Available Separately
24	Pad Spring	4	Part Number: 68324769

BOOT KIT

KIT225201

Exp. View Item No.	Part Description	Qty.	Comments
5	Bridge Bolts	4	Not Available Separately
7	Slide Pin Boot	2	
11	Manual Adjuster Cover	1	
14	Piston Boot	2	
Not Shown	Grease	1	

PADWEAR INDICATOR KIT

KIT225207

Exp. View Item No.	Part Description	Qty.	Comments
8	Spring	4	Not Available Separately
17	Indicator	4	

ELECTRONIC PADWEAR KIT

KIT225207ES

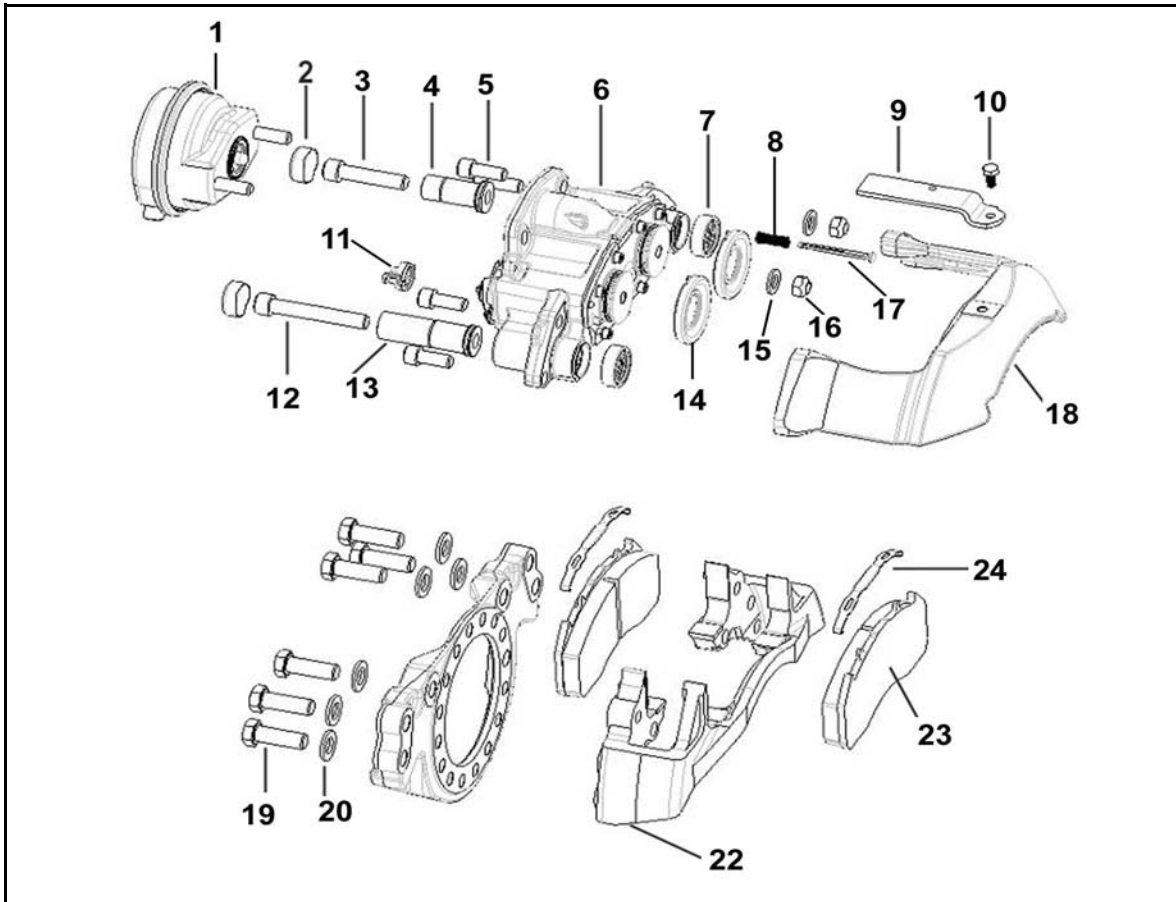
Exp. View Item No.	Part Description	Qty.	Comments
Not Shown	PWWI/Sensor	2	Not Available Separately
Not Shown	Bolts	2	
Not Shown	Brackets	2	

MST1504	Vacuum Test Adapter Plug
----------------	--------------------------

68966091Z	Grease Pack (20 pack)
------------------	-----------------------

NOTE: Service instruction maintenance manual MM-0467 is available at arvinmeritor.com

EX225L2 AIR DISC BRAKE



SERVICE CALIPER

EX225L201XX000 (Shown)

Exp. View Item No.	Part Description	Qty.	Comments
2	Slide Pin Cap	2	Recommend Service Chamber also be replaced.
3	Short Slide Pin Bolt	1	
4	Short Slide Pin	1	
5	Bridge Bolts	4	
6	Caliper Housing Assembly	1	
7	Slide Pin Boot	2	
8	Visual Wear Indicator Spring	1	
9	Retainer	1	
10	Retainer Screw	1	
11	Manual Adjuster Cover	1	
12	Long Slide Pin Bolt	1	
13	Long Slide Pin	1	
14	Piston Boot	2	
17	Visual Wear Indicator	1	
18	Caliper Bridge	1	
22	Carrier	1	

NOTE: Service instruction maintenance manual MM-0467 is available at arvinmeritor.com

EX225L2 AIR DISC BRAKE

SERVICE CALIPER

EX225L202XX000 (Opposite)

Exp. View Item No.	Part Description	Qty.	Comments
2	Slide Pin Cap	2	Recommend Service Chamber also be replaced.
3	Short Slide Pin Bolt	1	
4	Short Slide Pin	1	
5	Bridge Bolts	4	
6	Caliper Housing Assembly	1	
7	Slide Pin Boot	2	
8	Visual Wear Indicator Spring	1	
9	Retainer	1	
10	Retainer Screw	1	
11	Manual Adjuster Cover	1	
12	Long Slide Pin Bolt	1	
13	Long Slide Pin	1	
14	Piston Boot	2	
17	Visual Wear Indicator	1	
18	Caliper Bridge	1	
22	Carrier	1	

CALIPER TO TORQUE PLATE MOUNTING KIT

KIT 225205 - For FH & FL Axles KIT 225208 - For FF/FG, R Axles

Exp. View Item No.	Part Description	Qty.	Comments
19	Carrier Bolts	6	Not Available Separately
20	Washer	6	

SLIDE PIN KIT

KIT225200L

Exp. View Item No.	Part Description	Qty.	Comments
3	Short Slide Pin Bolt	1	Not Available Separately
4	Short Slide Pin	1	
5	Bridge Bolts	4	
7	Slide Pin Boot	2	
12	Long Slide Pin Bolt	1	
13	Long Slide Pin	1	
14	Piston Boot	2	
Not Shown	Grease	1	

DISC PAD RETAINING KIT

KIT225210

Exp. View Item No.	Part Description	Qty.	Comments
9	Retainer	1	Not Available Separately
10	Retainer Screw	1	

NOTE: Service instruction maintenance manual MM-0467 is available at arvinmeritor.com

EX225L2 AIR DISC BRAKE

EX-225 PAD 761

KIT2252L2CD

Exp. View Item No.	Part Description	Qty.	Comments
23	Pad Assembly	4	Not Available Separately
24	Pad Spring	4	Part Number: 68324769

BOOT KIT

KIT225201

Exp. View Item No.	Part Description	Qty.	Comments
5	Bridge Bolts	4	Not Available Separately
7	Slide Pin Boot	2	
11	Manual Adjuster Cover	1	
14	Piston Boot	2	
Not Shown	Grease	1	

PADWEAR INDICATOR KIT

KIT225207

Exp. View Item No.	Part Description	Qty.	Comments
8	Spring	4	Not Available Separately
17	Indicator	4	

ELECTRONIC PADWEAR KIT

KIT225207ES

Exp. View Item No.	Part Description	Qty.	Comments
Not Shown	PWWI/Sensor	2	Not Available Separately
Not Shown	Bolts	2	
Not Shown	Brackets	2	

MST1504	Vacuum Test Adapter Plug
----------------	--------------------------

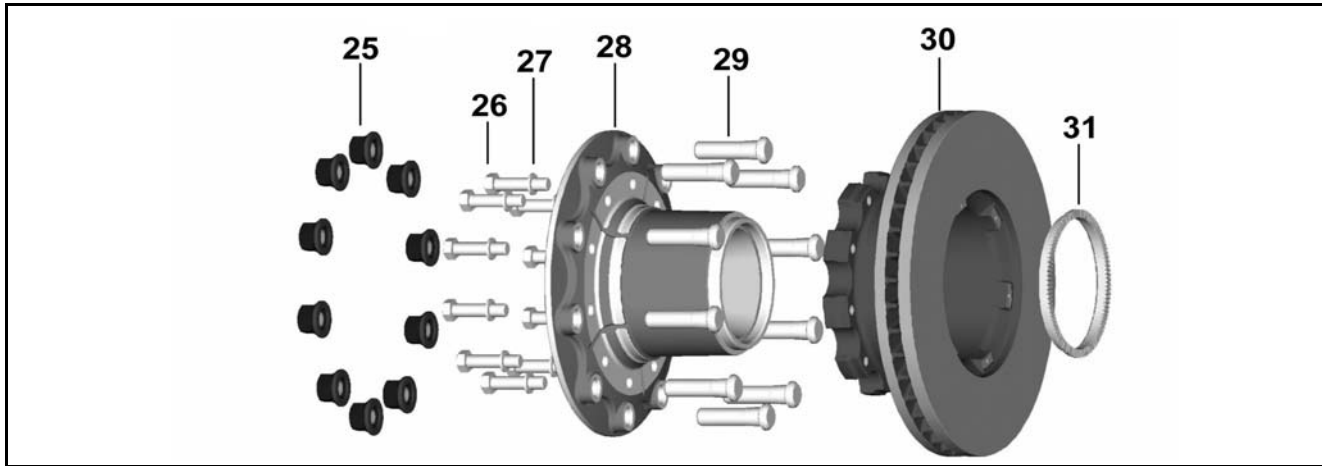
68966091Z	Grease Pack (20 pack)
------------------	-----------------------

EX225 AIR DISC BRAKE BRAKE CHAMBERS

Exp. View Item No.	Part Number	Qty.	Comments
1	A93-3276-X-24	As Needed	Type 24. Port angle 45°, Side Clamp Angle 90°
	A94-3276-X-24		Type 24. Port angle 315°, Side Clamp Angle 270°
	C52-3276-X-24		Type 24/30. Port Angle 270°, Clamp Angle 130°
	A1-3376-T-20		Type 20 double diaphragm chamber with hardware.
	D2-3376-T-20		Type 20/24 double diaphragm chamber with hardware. Clock Angle 45°
	D4-3376-T-20		Type 20/24 double diaphragm chamber with hardware. Clock Angle 135°
15	Chamber Washer	2	
16	Chamber Nut	2	

NOTE: Service instruction maintenance manual MM-0467 is available at arvinmeritor.com

EX225 AIR DISC BRAKE FRONT HUB ASSEMBLIES



17-15986-1005

Exp. View Item No.	Part Number	Description	Qty.	Comments
25	R006000A	Flanged Wheel Nuts	10	
26	S-11016P-2	Bolts	10	
27	08-201941	Washers	10	
28	05-15986-004	Front hub assy. less rotor with wheel studs	1	Alum Wheel with ABS
29	09-001989	Wheel Studs	10	For Alum Wheels
30	23-123642-002	Rotor	1	
31	09-002209	ABS Tone Ring	1	

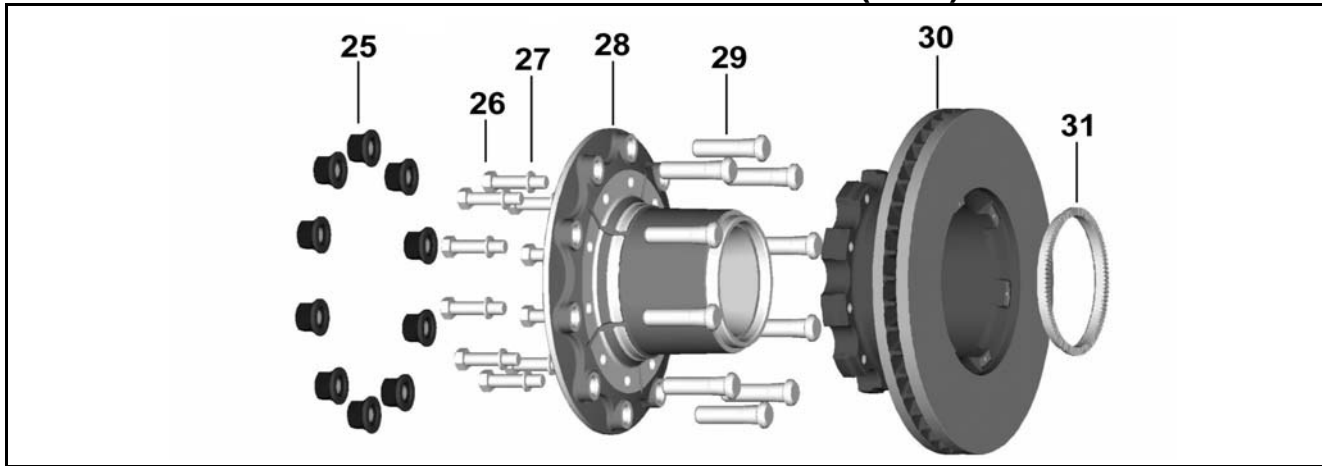
17-15988-1001

Exp. View Item No.	Part Number	Description	Qty.	Comments
25	R006000A	Flanged Wheel Nuts	10	
26	S-11016M-2	Bolts	10	
27	08-201941	Washers	10	
28	05-15988-001	Front hub assy. less rotor with wheel studs	1	Alum Wheel with ABS
29	09-002005	Wheel Studs	10	For Alum Wheel
30	23-123642-002	Rotor	1	
31	09-002206	ABS Tone Ring	1	

17-15988-1002

Exp. View Item No.	Part Number	Description	Qty.	Comments
25	R006000A	Flanged Wheel Nuts	10	
26	S-11016M-2	Bolts	10	
27	08-201941	Washers	10	
28	05-15988-002	Front hub assy. less rotor with wheel studs	1	Steel Wheel with ABS
29	09-001988	Wheel Studs	10	For Steel Wheel
30	23-123642-002	Rotor	1	
31	09-002206	ABS Tone Ring	1	

EX225 AIR DISC BRAKE FRONT HUB ASSEMBLIES (cont)



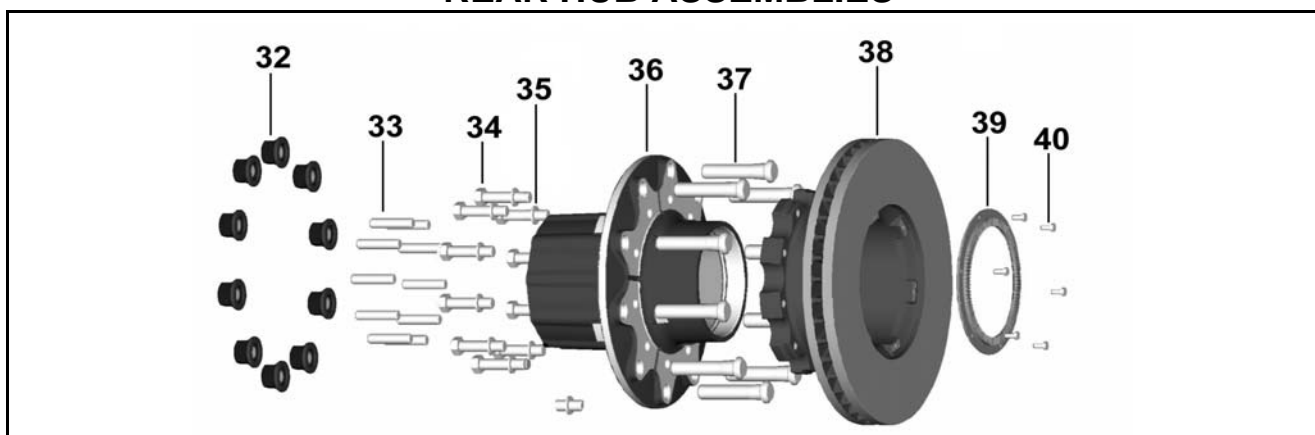
17-16007-1000

Exp. View Item No.	Part Number	Description	Qty.	Comments
25	R006000A	Flanged Wheel Nuts	10	
26	MS-216065M-2	Bolts	10	
27	1229-U-1503Z	Washers	10	
28	05-16007-002	Front hub assy. less rotor with wheel studs	1	Steel Wheel with ABS
29	09-002228	Wheel Studs	10	For Steel Wheels
30	23-123647-002	Rotor	1	
31	09-002166	ABS Tone Ring	1	

17-16008-1000

Exp. View Item No.	Part Number	Description	Qty.	Comments
25	R006000A	Flanged Wheel Nuts	10	
26	S-11016M-2	Bolts	10	
27	08-201941	Washers	10	
28	05-16008-002	Front hub assy. less rotor with wheel studs	1	Steel Wheel with ABS
29	09-002228	Wheel Studs	10	For Steel Wheels
30	23-123642-002	Rotor	1	
31	09-002166	ABS Tone Ring	1	

EX225 AIR DISC BRAKE REAR HUB ASSEMBLIES



16-15992-1011

Exp. View Item No.	Part Number	Description	Qty.	Comments
32	R006000A	Flanged Wheel Nuts	10	
33	08-007471	Drive Studs	10	
34	S-11014P-2	Bolts	10	
35	08-201941	Washers	10	
36	04-15992-004	Rear hub assy. less rotor with wheel & drive studs	1	Dual Alum Wheel with ABS
37	09-002003	Wheel Studs	10	Dual Alum Wheel
38	23-123642-002	Rotor	1	
39	09-002209	ABS Tone Ring	1	

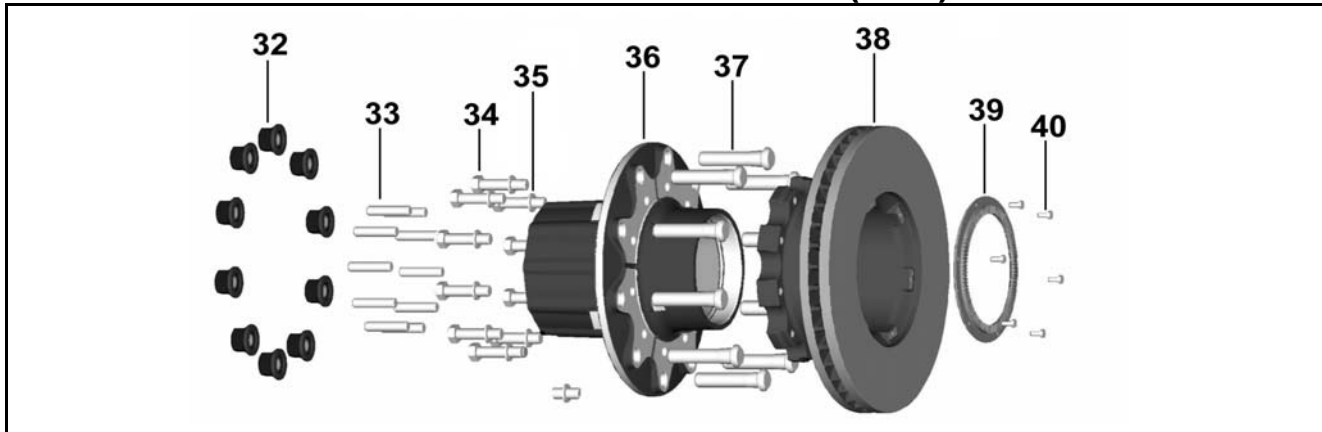
16-16000-1006

Exp. View Item No.	Part Number	Description	Qty.	Comments
32	R006000A	Flanged Wheel Nuts	10	
33	08-008551	Drive Studs	10	
34	S-11014P-2	Bolts	10	
35	08-201941	Washers	10	
36	04-16000-006	Rear hub assy. less rotor with wheel & drive studs	1	Dual Steel/Alum with ABS
37	09-002004	Wheel Studs	10	Dual Steel/Alum
38	23-123642-002	Rotor	1	
39	09-002209	ABS Tone Ring	1	

16-16001-1000

Exp. View Item No.	Part Number	Description	Qty.	Comments
32	R006000A	Flanged Wheel Nuts	10	
33	08-008551	Drive Studs	10	
34	S-11014P-2	Bolts	10	
35	08-201941	Washers	10	
36	04-16001-001	Rear hub assy. less rotor with wheel & drive studs	1	Dual Steel/Alum with ABS
37	09-002004	Wheel Studs	10	Dual Steel/Alum
38	23-123642-002	Rotor	1	
39	09-002209	ABS Tone Ring	1	

EX225 AIR DISC BRAKE REAR HUB ASSEMBLIES (cont)



16-16001-1001

Exp. View Item No.	Part Number	Description	Qty.	Comments
32	R006000A	Flanged Wheel Nuts	10	
33	08-008551	Drive Studs	10	
34	S-11014P-2	Bolts	10	
35	08-201941	Washers	10	
36	04-16001-002	Rear hub assy. less rotor with wheel & drive studs	1	Dual Steel/Alum without ABS
37	09-002004	Wheel Studs	10	Dual Steel/Alum
38	23-123642-002	Rotor	1	

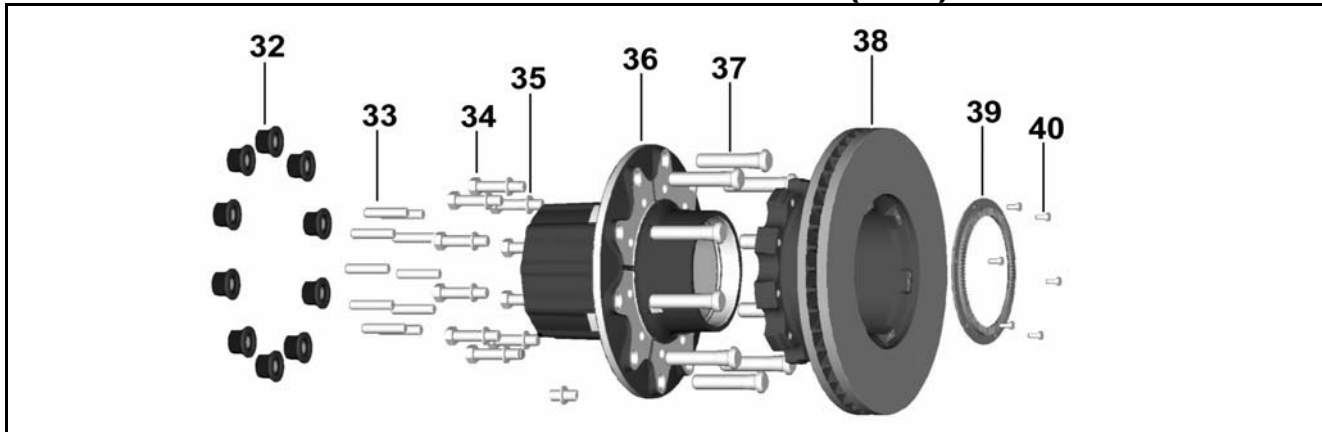
16-16001-1002

Exp. View Item No.	Part Number	Description	Qty.	Comments
32	R006000A	Flanged Wheel Nuts	10	
33	08-008551	Drive Studs	10	
34	S-11014P-2	Bolts	10	
35	08-201941	Washers	10	
36	04-16001-003	Rear hub assy. less rotor with wheel & drive studs	1	Dual Steel with ABS
37	09-001989	Wheel Studs	10	Dual Steel
38	23-123642-002	Rotor	1	
39	09-002209	ABS Tone Ring	1	

16-16001-1003

Exp. View Item No.	Part Number	Description	Qty.	Comments
32	R006000A	Flanged Wheel Nuts	10	
33	08-008551	Drive Studs	10	
34	S-11014P-2	Bolts	10	
35	08-201941	Washers	10	
36	04-16001-004	Rear hub assy. less rotor with wheel & drive studs	1	Dual Steel without ABS
37	09-001989	Wheel Studs	10	Dual Steel
38	23-123642-002	Rotor	1	

EX225 AIR DISC BRAKE REAR HUB ASSEMBLIES (cont)



16-16001-1004

Exp. View Item No.	Part Number	Description	Qty.	Comments
32	R006000A	Flanged Wheel Nuts	10	
33	08-008551	Drive Studs	10	
34	S-11014P-2	Bolts	10	
35	08-201941	Washers	10	
36	04-16001-005	Rear hub assy. less rotor with wheel & drive studs	1	Dual Alum with ABS
37	09-002003	Wheel Studs	10	Dual Alum
38	23-123642-002	Rotor	1	
39	09-002209	ABS Tone Ring	1	

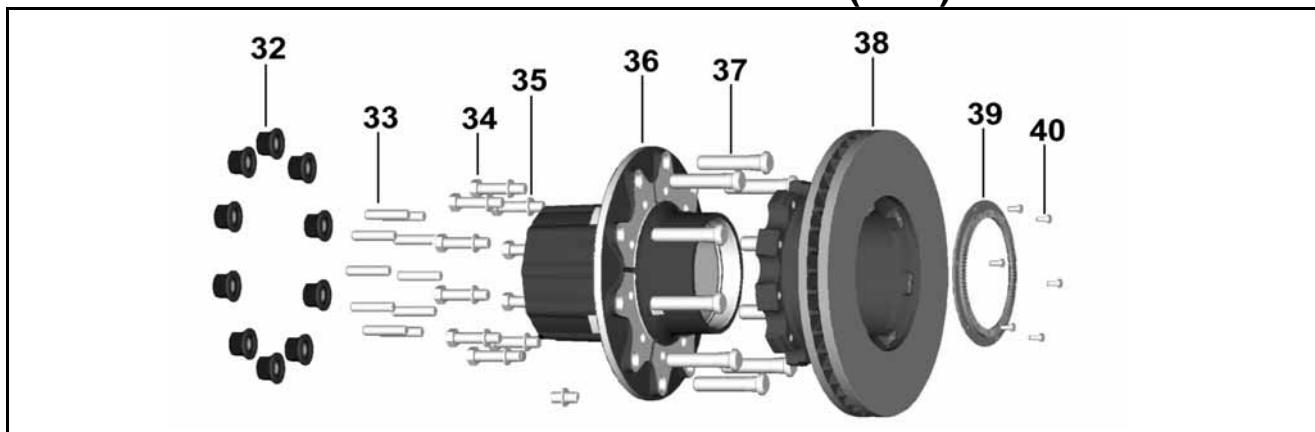
16-16001-1005

Exp. View Item No.	Part Number	Description	Qty.	Comments
32	R006000A	Flanged Wheel Nuts	10	
33	08-008551	Drive Studs	10	
34	S-11014P-2	Bolts	10	
35	08-201941	Washers	10	
36	04-16001-006	Rear hub assy. less rotor with wheel & drive studs	1	Dual Alum without ABS
37	09-002003	Wheel Studs	10	Dual Alum
38	23-123642-002	Rotor	1	

16-16009-1001

Exp. View Item No.	Part Number	Description	Qty.	Comments
32	R006000A	Flanged Wheel Nuts	10	
33	4-X-1612	Drive Studs	10	
34	MS-216065M-2	Bolts	10	
35	1229-U-1503Z	Washers	10	
36	04-16009-003	Rear hub assy. less rotor with wheel & drive studs	1	
37	09-002003	Wheel Studs	10	
38	23-123647-002	Rotor	1	
39	09-002165	ABS Tone Ring	1	
40	08-205900	ABS Tone Ring Bolts	6	

EX225 AIR DISC BRAKE REAR HUB ASSEMBLIES (cont)



16-16017-1000

Exp. View Item No.	Part Number	Description	Qty.	Comments
32	R006000A	Flanged Wheel Nuts	10	
33	08-205994	Drive Studs	10	
34	MS-216070M-2	Bolts	10	
35	1229-U-1503Z	Washers	10	
36	N/A	Rear hub assy. less rotor with wheel & drive studs	1	
37	09-001988	Wheel Studs	10	Dual Steel Wheel
38	23-123647-002	Rotor	1	
39	09-002165	ABS Tone Ring	1	
40	08-205900	ABS Tone Ring Bolts	6	

16-16017-1001

Exp. View Item No.	Part Number	Description	Qty.	Comments
32	R006000A	Flanged Wheel Nuts	10	
33	08-205994	Drive Studs	10	
34	MS-216070M-2	Bolts	10	
35	1229-U-1503Z	Washers	10	
36	04-16017-002	Rear hub assy. less rotor with wheel & drive studs	1	
37	09-001728	Wheel Studs	10	Dual Alum Wheel
38	23-123647-002	Rotor	1	
39	09-002165	ABS Tone Ring	1	
40	08-205900	ABS Tone Ring Bolts	6	

ArvinMeritor™

Commercial Vehicle Aftermarket

Meritor Heavy Vehicle Systems, LLC
7975 Dixie Highway
Florence, KY 41042 USA
888-725-9355
www.arvinmeritor.com
xpresswayplus.arvinmeritor.com

Information contained in this publication was in effect at the time the publication was approved for printing and is subject to change without notice or liability. ArvinMeritor reserves the right to revise the information presented or discontinue the production of parts described at any time.

Copyright 2010
ArvinMeritor, Inc.

Printed in U.S.A.

Revised 1/2010
PB-8857B